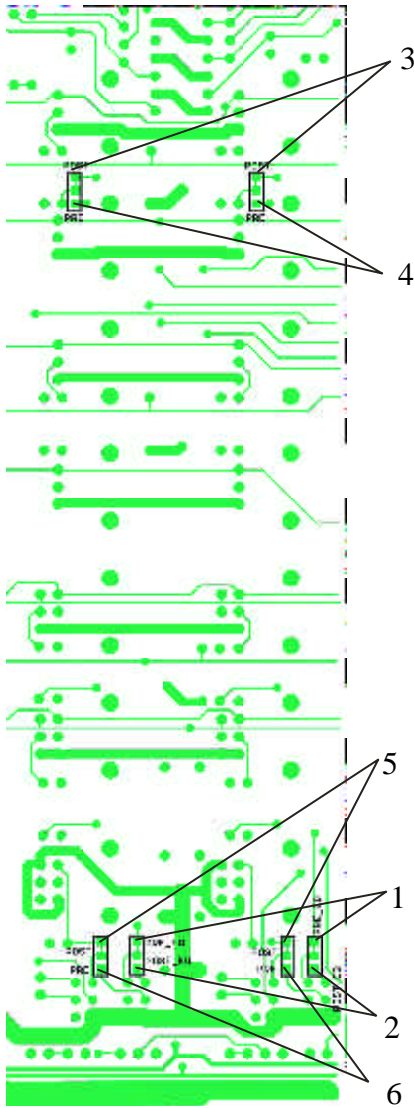
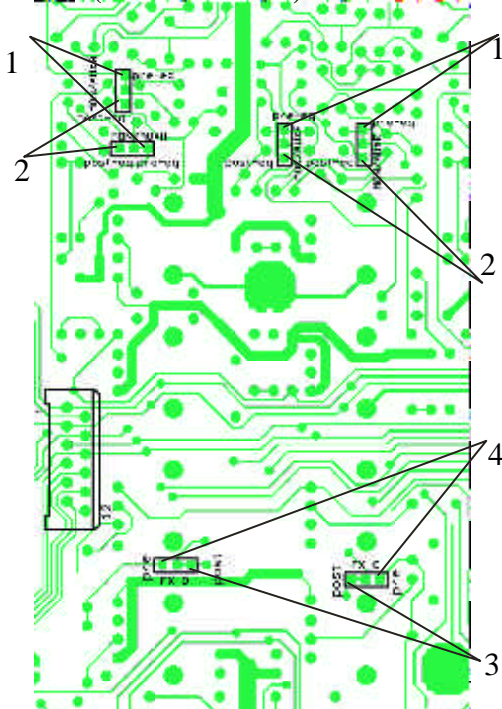


MONO P.C.B. (2channels shown)



STEREO P.C.B. (2channels shown)



Internal Modifications

The console is designed to satisfy almost all applications. The internal modifications are offered to provide alternative routings for very special applications. All modifications can be carried out from the bottom side of the P.C.B..

Warning: The modifications involve cutting of traces and resoldering of specially designed pads and should only be carried out by a competent electronic technician. MIDAS accepts no responsibility for any damages or injuries. In case of damages by modifications, MIDAS may declare warranty privileges void.

To open the unit, the following steps are necessary:

1. Remove all cords including the mains cord.
2. Remove the sidewings and the armrest.
3. Remove the screws that attach the top panel.
4. Open the top panel carefully. Now you have access to the bottom side of the P.C.B..

Mon and aux sends post-eq :

1. Cut here.
2. Solder here.

Fx sends pre-eq:

3. Cut here.
4. Solder here.

Direct outs pre-fader:

5. Cut here.
6. Solder here.

